

# Making energy social

integrating practice theory, the social norm approach  
and community action

Kevin Burchell and Ruth Rettie  
Kingston University

EASST 2010, Trento, Italy  
3<sup>rd</sup> September, 2010

**Kingston University** London



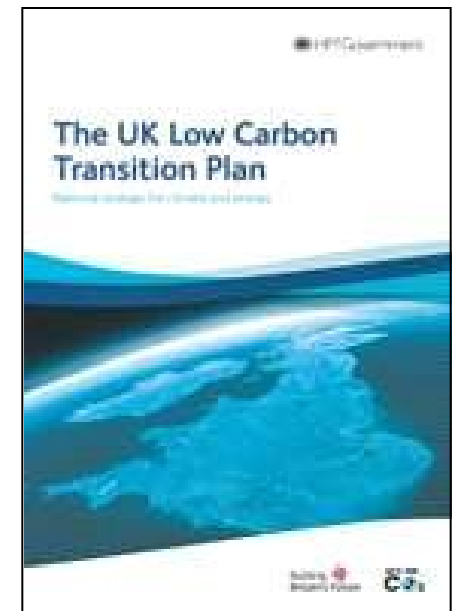
**CHARM**\*

Smart Communities  
ESRC Energy and Communities

**When energy  
isn't social**

# UK Low Carbon Transition Plan

- Published by Department for Energy and Climate Change in July 2009.
- Noticeable emphasis on behaviour change (alongside infrastructural and technological developments)
- (Dietz, Stern et al. argue that reductions of 7.4% of total US CO<sub>2</sub> emissions are possible through household behaviour change alone)
- Emergence of officially-sponsored 'behaviour change programmes'





< Enter your search terms here > Search

Climate change: the facts

What you can do

What Government is doing

What business is doing

Current campaigns

About ACT ON CO2

## Boiler scrappage scheme offer

The Boiler Scrappage Scheme can save you £400 when you replace your old G-rated boiler with a new A-rated alternative

1 2 3 4 5 6 PAUSE



Calculate your carbon footprint

Find out how much CO2 you create and reduce your carbon footprint.



Compare new car CO2 emissions

Compare the CO2 emissions and fuel costs of all new cars.

### Climate change: the facts



The scientific evidence behind climate change and why we must act now to prevent profound effects that will alter our quality of life.

- [The greenhouse effect](#)
- [Climate change myths](#)
- [Climate change effects on the UK](#)
- [The global effects of climate change](#)



### What you can do

It's up to us how the story ends. Lower your CO2 emissions with these helpful tips.



### What Government is doing

The international climate change conference took place in Copenhagen. Find out what the UK Government did to achieve a deal on carbon emissions.



### What business is doing

How ACT ON CO2's brand partners are working with Government and citizens to help tackle climate change.

### News

#### World's biggest wind turbine blades

The latest £8m funding for offshore wind technology was made available today as the Prime Minister hailed the UK...

#### Energy security boost

The UK's gas storage capacity could increase by 30%, as the Government today issued the first licence under a new regime...

#### Boiler Scrappage Scheme

54,758 vouchers have been snapped up under the Government's Boiler Scrappage scheme leaving around 70,000 vouchers worth a total of £28 million...

More news articles Prev Next

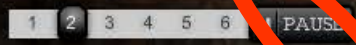


< Enter your search terms here >  Search

- Climate change: the facts
- What you can do
- What Government is doing
- What business is doing
- Current campaigns
- About ACT ON CO2

## Boiler scrappage scheme offer

The Boiler Scrappage Scheme can save you £400 when you replace your old G-rated boiler with a new A-rated alternative.



Calculate your carbon footprint ▶  
Find out how much CO2 you create and reduce your carbon footprint.



Compare new car CO2 emissions ▶  
Compare the CO2 emissions and fuel costs of all new cars.

### Climate change: the facts



The scientific evidence behind climate change and why we must act now to prevent profound effects that will alter our quality of life.

- [The greenhouse effect](#)
- [Climate change myths](#)
- [Climate change effects on the UK](#)
- [The global effects of climate change](#)



### What you can do

It's up to us how the story ends. Lower your CO2 emissions with these helpful tips.



### What Government is doing

The international climate change conference took place in Copenhagen. [Find out](#) what the UK Government did to achieve a deal on carbon emissions.



### What business is doing

How ACT ON CO2's brand partners are working with Government and citizens to help tackle climate change.

### News

**World's biggest wind turbine blades**  
The latest £8m funding for offshore wind technology was made available today as the Prime Minister hailed the UK...

**Energy security boost**  
The UK's gas storage capacity could increase by 30%, as the Government today issued the first licence under a new regime...

**Boiler Scrappage Scheme**  
57,758 vouchers have been snapped up under the Government's Boiler Scrappage Scheme leaving around 70,000 vouchers worth a total of £28 million...

[More news articles](#) [Prev <<](#) [>> Next](#)

# Climate change: the facts



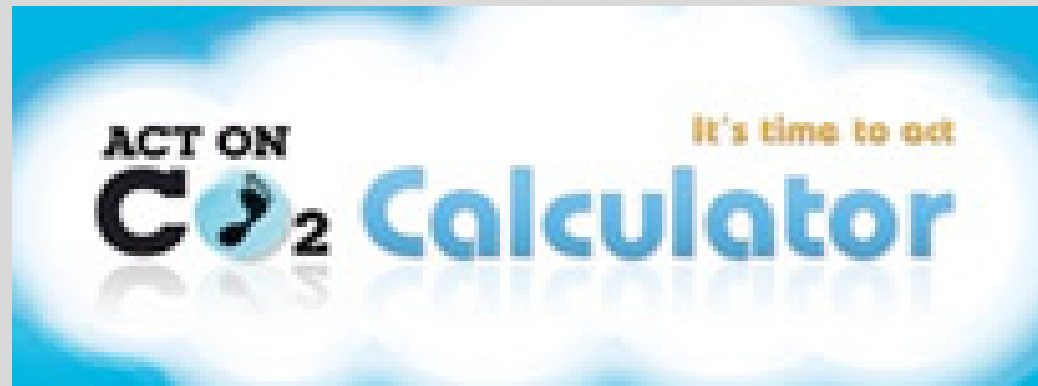
The scientific evidence behind climate change and why we must act now to prevent profound effects that will alter our quality of life.

The greenhouse effect

Climate change myths

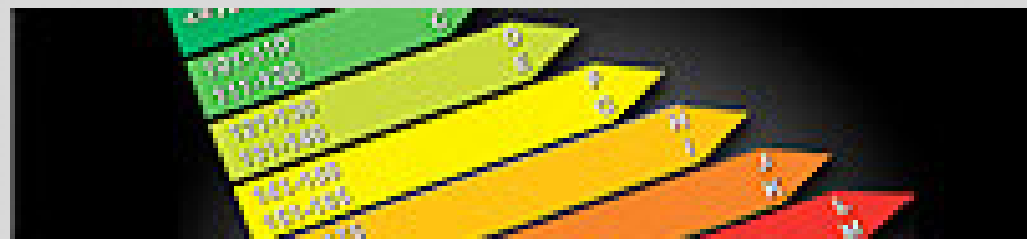
Climate change effects on the UK

The global effects of climate change



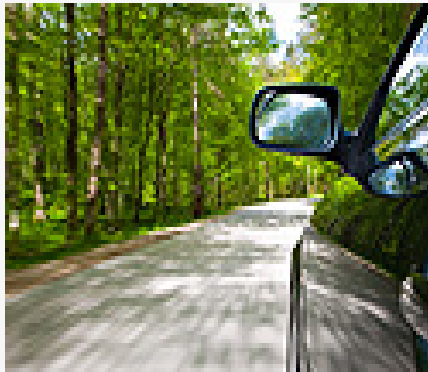
Calculate your carbon footprint ▶

Find out how much CO<sub>2</sub> you create and reduce your carbon footprint.



Compare new car CO<sub>2</sub> emissions ▶

Compare the CO<sub>2</sub> emissions and fuel costs of all new cars.



## What you can do

It's up to us how the story ends. Lower your CO<sub>2</sub> emissions with these helpful tips.



## What Government is doing

The international climate change conference took place in Copenhagen. **Find out** what the UK Government did to achieve a deal on carbon emissions.



## What business is doing

How ACT ON CO<sub>2</sub>'s brand partners are working with Government and citizens to help tackle climate change.



## Boiler scrappage scheme offer

The Boiler Scrappage Scheme can save you £400 when you replace your old G-rated boiler with a new A-rated alternative

1

2

3

4

5

6

||

PAUSE

The best guide to finding the right boiler is available in the guide book. Visit us online at the [Energy Saving Trust](#)

High Pressure Kingfisher

# Where is the social?

- Embodied in such programmes are assumed relationships between communication, information, education, awareness, attitudes, incentives and behaviour.
- Knowledge deficit models (cf PUS)
- Values-action gaps models
- These approaches have been criticised as
  - (overly) individualistic and rationalistic (and drawing solely from social psychology and behavioural economics)
  - Neglectful or unaware of the social (contextual, contingent, multi-rational, experiential) nature of such relationships

# **Three social approaches**

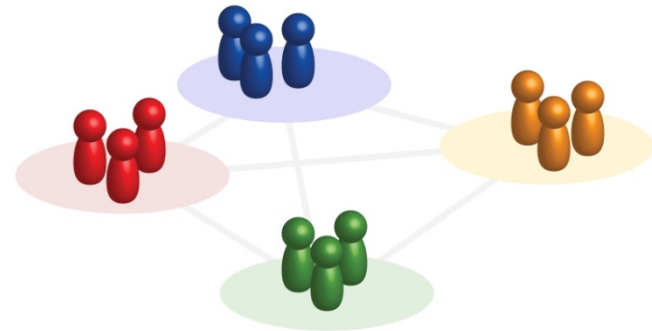
# Practice theory

- A suite of analytical approaches
- Employ practices as the focus of analysis
- Cooking, cleanliness, being comfortable, recreation
- ‘Behaviour’ recast as part of a social practice (thinkings, doings, understandings, things, norms, contexts) (Schatzki, Reckwitz)
- Practices as
  - taken-for-granted, habitual (Shove)
  - stable, yet malleable (Shove)
- Energy as invisible within practices (Wilhite, Shove)
- Energy consumption derives from practices (cf Warde)
- However, practice theory lacks empirical or practical application in the context of ‘behaviour change’




# The social norm approach

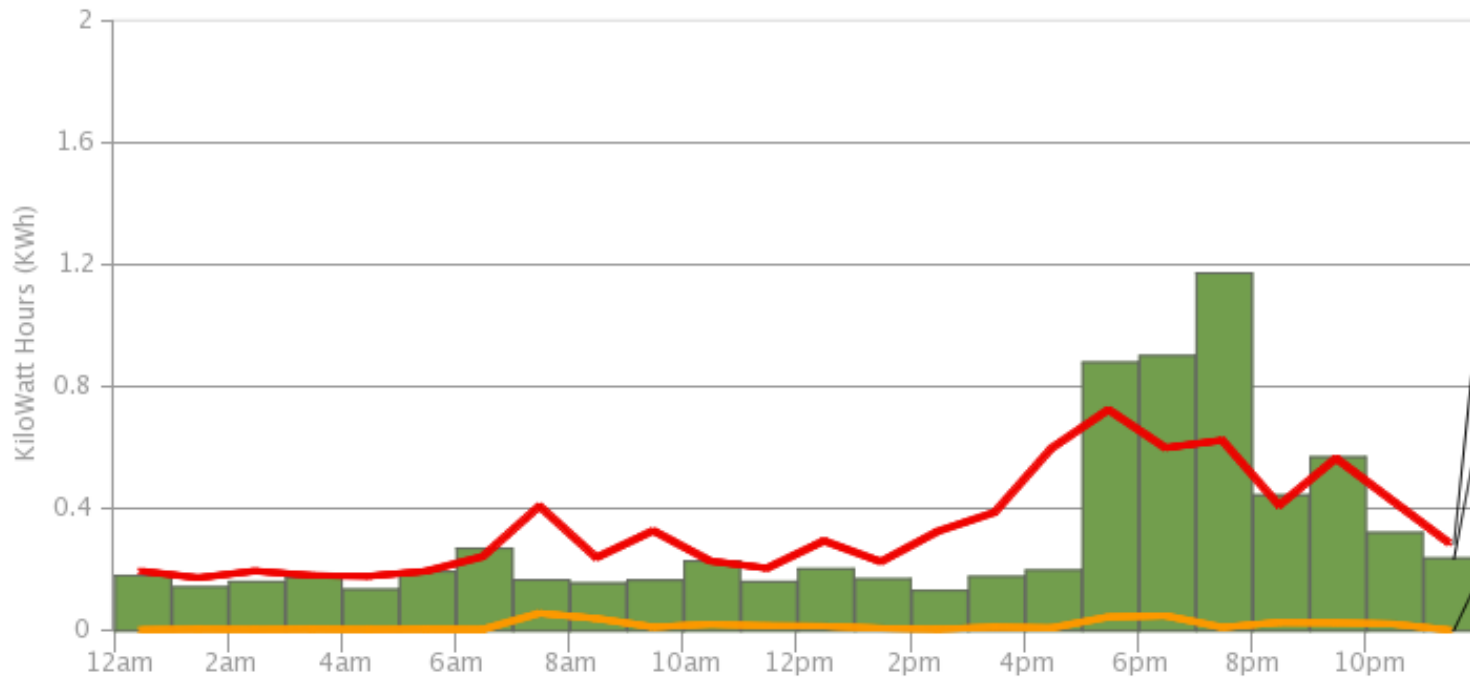
- Rooted in (social) psychology theories of conformity: *people tend to conform to what other people do*
- Particular behaviour can be encouraged by *telling people about the social prevalence of that behaviour*
- The social norm approach has been applied to
  - Campus issues: alcohol, smoking, drugs (Berkowitz, Perkins)
  - Sustainability: energy consumption, hotel towel re-use, conservation (Cialdini, Schultz)
- The social norm approach in CHARM



# Electricity Consumption

 Your energy consumption is just below average 😊 Well done, keep it up!

Yesterday



The average in your neighbourhood

Your energy consumption 😊 Well done, keep it up!

The best 20% in your neighbourhood



Today



Yesterday



Last week



The whole study



Energy saving tips



Change password



Log off

# The social norm approach

- The social norm approach provides a socially-based injunction
- However, within the social psychology contexts in which it has been developed, 'behaviour change' itself is understood, acted upon and investigated at the level of the individual
- The potential of the social norm approach in a community context has not been examined

# Community action

- An important element in action research approaches to energy and carbon (Heiskanen, Darby, Middlemiss)
- Can facilitate
  - Social learning (Darby)
  - Catalytic potential of specific individuals and institutions, and proximity and locale
  - Changes in attitudes and behaviour
  - Social memory and capacity
- Community action research on energy has not emphasised either practices or social norms





# **The Smart Communities approach**

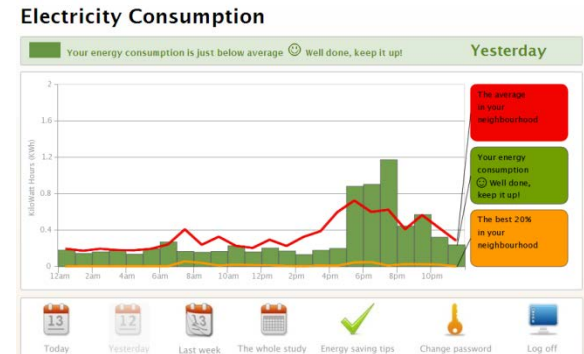
# Practices as community deliberation

- In Smart Communities, the sensibilities associated with practice theory will be employed, examined and evaluated as a framework in community deliberation
  - Disrupt the habitual and taken-for-granted nature of the practices of households in a community
  - Make energy visible in practices
  - Make discussion of energy part of the practice
  - Make energy reduction part of the practice
  - Identify areas of relative individual and community agency within practices, such as behaviour (and relative constraint, such as government policy and energy infrastructure)
  - Identify energy reducing practices and norms that the community wishes to purposively develop as new community low carbon norms



# Social norms as community catalyst

- In Smart Communities social norm approach will be employed, examined and evaluated as an approach to support the widespread adoption of new community low carbon norms
- Smart Communities will employ a community web site on which data is recorded by the community *and* social norm feedback is provided to the community
  - Pledges to try new norms
  - Trying out new norms
  - Adoption of new norms
  - Energy consumption itself
- Social norm feedback joins energy and reflection as part of the practice



# Community action

- Five project partners
  - Local school (local community drama)
  - Local authority sustainability team
  - Local authority library services team (eco gadget lending library)
  - Local sustainability group
  - Energy Savings Trust
- Community participants
  - Households of children at the school
  - Other households in the vicinity of the school (approx 1000 in total)
  - Local mavers
- Community-led wherever possible
  - Community meetings
  - Cycles of action tackling different practices



# Thank you

**Kingston University** London



**CHARM**\*

Smart Communities  
ESRC Energy and Communities