

LC-MS/MS-Based Assay for Free and Deconjugated Testosterone and Epitestosterone in Rat Urine and Serum

Carl Jenkinson¹, Nawed IK Deshmukh², Itaf Shah¹, Gergely Zachár³, Andrea D Székely³, Andrea Petroczi¹ and Declan P Naughton^{1*}

¹School of Life Sciences, Kingston University, Kingston upon Thames, London, UK

²School of Pharmacy and Chemistry, Kingston University, Kingston upon Thames, London, UK

³Department of Anatomy, Histology and Embryology, Semmelweis University, Hungary

Abstract

Testosterone and epitestosterone are mainly excreted as glucuronides. The aim of this study was to develop and validate a method using liquid chromatography tandem mass spectrometry (LC-MS/MS) to analyse testosterone and epitestosterone in rat serum and urine to assist *in vivo* studies on steroid metabolism. The method was developed by spiking charcoal stripped rat plasma and urine with the analytes. The developed method was then applied to serum (n=6) and urine samples (n=6) from young male brown Norway rats to determine testosterone and epitestosterone concentrations. The assay showed linearity within quantification range coefficient (r^2) values above 0.991. Optimum conditions were determined for the deconjugation of glucuronidated testosterone and epitestosterone along with the internal standard stanozolol D3. Accuracy, precision and extraction recovery for both compounds was satisfactory in both matrices. The method was capable of quantifying 0.250 ng/mL concentrations of testosterone and epitestosterone in 100 μ L of serum and urine. The average concentrations of free and deconjugated testosterone and epitestosterone found in the rat samples were: urine—201.68 \pm 90.16 ng/mL and 85.37 \pm 21.20 ng/mL; serum—363.40 \pm 11.615 ng/mL and 1.75 \pm 0.118 ng/mL, respectively. This method is sensitive, specific and reproducible for the determination of free and deconjugated testosterone and epitestosterone in rat serum and urine. The method can be used for *in vivo* analysis for further investigations of testosterone and epitestosterone concentrations in studies monitoring endocrine dysfunctions and doping.

Keywords: Bioanalytical methods; Biological samples; Clinical/ biomedical analysis; HPLC

Introduction

The 2014 World Anti-Doping Agency (WADA) Prohibited List shows testosterone and epitestosterone listed as class S1.1a and S1.1b, with its use banned in and out of competition [1]. Doping with testosterone is suspected if the urinary ratio of testosterone over epitestosterone (T/E) exceeds 4 [2]. According to the 2012 (WADA) laboratory statistics, elevated testosterone based on the testosterone over epitestosterone (T/E) ratio accounts for 55.5% of atypical findings within the anabolic agents' drug class from a total of 2,279 for all anabolic agents, which constitute half of all adverse and atypical findings [3]. This T/E ratio approach to testing for testosterone abuse is only accurate if testosterone and epitestosterone are metabolised at the same rate and no other external factors or inter individual factors would alter the metabolism of these steroids [4].

One of the major metabolic pathways in testosterone and epitestosterone regulation and elimination is by glucuronidation through addition of glucuronic acid by UDP-glucuronosyltransferase (UGT) enzymes for excretion in urine. Variations in enzyme preference are observed with UGT 2B17 predominating for testosterone glucuronidation, whilst UGT2B7 is the most active UGT for epitestosterone glucuronidation [5]. A variety of effectors of steroid UGT glucuronidation have been identified, including pharmacogenetic variations resulting in different UGT2B17 expression which affects the urinary T/E ratios [6-8]. A number of *in vitro* studies have identified small molecule inhibitors of UGT2B17 and other UGTs toward testosterone metabolism. These inhibitors include non-steroidal anti-inflammatory drugs diclofenac and ibuprofen [5], flavonoids commonly found in red wine [9] and catechins in green and white tea [10]. As doping tests for testosterone abuse involve deconjugation

by β -glucuronidase to determine total urinary T/E ratios, the doping test could be affected by the inhibitory effects of pharmaceuticals and dietary components. Inhibition of testosterone glucuronidation could lead to an increase in testosterone in serum leading to potential adverse health effects. Extending these potentially significant *in vitro* results to *in vivo*, experimentation calls for a streamlined analytical procedure that caters for analysing multiple biological samples, such as urine and blood without introducing intra-method variances owing to different sensitivity and specificity.

This report describes a method to determine testosterone and epitestosterone levels in rat serum and urine using liquid chromatography tandem mass spectrometry (LC-MS/MS). Rat models have a number of advantages for controlled clinical trials, including standardised conditions and diet, and testosterone is glucuronidated by phase 2 metabolism as is in humans [11,12]. This method could be applied to such rat studies, where the measurement of testosterone and epitestosterone in these matrices are required through the duration of study.

***Corresponding author:** Prof. Declan Naughton, School of Life Sciences, Kingston University, Kingston upon Thames, London KT1 2EE, UK, Tel: +44 208 547 7097; Fax: +44 208 547 7562; E-mail: D.Naughton@kingston.ac.uk

Received December 16, 2013; **Accepted** January 15, 2014; **Published** January 17, 2014

Citation: Jenkinson C, Deshmukh NIK, Shah I, Zachár G, Székely AD, et al. (2014) LC-MS/MS-Based Assay for Free and Deconjugated Testosterone and Epitestosterone in Rat Urine and Serum. J Anal Bioanal Tech S5: 006. doi: [10.4172/2155-9872.S5-006](https://doi.org/10.4172/2155-9872.S5-006)

Copyright: © 2014 Jenkinson C, et al. This is an open-access article distributed under the terms of the Creative Commons Attribution License, which permits unrestricted use, distribution, and reproduction in any medium, provided the original author and source are credited.

Materials and Methods

Chemicals

Reference standards for testosterone and epitestosterone and testosterone glucuronide were purchased from Sigma Aldrich (Poole, UK). Epitestosterone glucuronide and stanozolol D3 (internal standard) were purchased from LGC Standards (Teddington, UK). All reference materials had a purity $\geq 98\%$. Sodium hydrogen phosphate heptahydrate, sodium phosphate monobasic dehydrate, HPLC grade pentane and LCMS grade acetonitrile and water were purchased from Sigma Aldrich (Poole, UK). β -Glucuronidase from *E. coli* (Cat No. 03707598001, Lot No. 13931722) was purchased from Roche Diagnostics (Burgess Hill, UK). Rat 4x charcoal stripped 0.2 μ filtered plasma and urine was purchased from Sera Laboratories. A SB C-18 column (2.1 mm, 50 mm, 1.8 μ m) and 0.2 μ m inline filter was purchased from Agilent (Stockport, UK). Syringe driven 0.2 μ m PTFE filters were purchased from Millipore (Watford, UK). Silanized glass vials were purchased from Sigma Aldrich (Poole, UK).

Animals and samples

Urine samples were obtained from six male, brown Norway rats (weighing 280-340 g) as part of an independent study [13], purchased from Charles River laboratories (Sulzfeld, Germany). Rats were kept under the conditions and urine samples were collected as described previously [13]. Water and food was available *ad libitum*. Normal serum samples from six male brown Norway rats were purchased from Sera Laboratories. These rats were approximately 11-12 weeks old weighing between 250-275 g. The serum and urine samples were thawed at 37°C and vortex mixed. Aliquots (100 μ L) were taken from each sample for analysis.

Enzyme hydrolysis of testosterone and epitestosterone glucuronide

The enzyme β -glucuronidase was used to deconjugate the glucuronide conjugates for the determination of total (glucuronide conjugated+unconjugated) concentration of testosterone and epitestosterone in serum and urine.

Sample purification

Liquid-liquid extraction was performed using pentane. The mixture was vortex mixed in a glass centrifuge for 20 seconds and centrifuged at 3220 \times g for 10 minutes at 4°C. The organic layer was transferred to a silanized vial and evaporated under incubation at 40°C using a gentle stream of compressed air. The sample were then reconstituted with 100 μ L of acetonitrile and filtered through a 0.2 micron PTFE membrane filter for analysis by LC-MS/MS.

Liquid chromatographic-tandem mass spectrometry

Testosterone and epitestosterone analyses were carried out based on a previous method [14], with modifications, using an LC-MS/MS system comprised of a 1260 infinity LC system (Agilent, Workingham, UK) coupled to a 6430 triple quadrupole mass spectrometer (Agilent, Workingham, UK). The LC system comprised of a binary pump, automatic degasser, column heater and 1290 infinity thermostated autosampler. Compounds were separated using a SB C-18 column (2.1 mm, 50 mm, 1.8 μ m) that was heated to 45°C. An inline filter 0.2 micron was used to prevent the analytical column from blocking. The mobile phase consisted of water (solvent A) and acetonitrile (solvent B) with the gradient as follows: 0-5 min (53% A: 47% B), 5-9 min (53% A:

47% B), 9-11 min (0% A: 100% B), 11-25 min (53% A: 47% B). The flow rate was 250 μ L/min and the injection volume was 4 μ L.

The mass spectrometer was set using electrospray ionisation (ESI) operated in positive ion mode. The protonated molecules, $[M+H]^+$, of testosterone and epitestosterone (m/z 289.3) and stanozolol D3 (m/z 332.5) were used as precursor ions for collision induced dissociation (CID) for MS-MS analysis. Multiple reactions monitoring (MRM) mode was used to monitor the precursor ions and diagnostic product ions for each analyte and internal standard based on a previous method [14]. Table 1 details the MRM transitions, collision energy and retention times of testosterone, epitestosterone and stanozolol D3.

The mass spectrometer parameter optimisation was performed using Masshunter optimizer software (version B.03.01). The conditions applied for optimum ionisation were capillary voltage 4000 V, drying gas temperature 325°C, drying gas flow rate 10 L/min, nebulising gas pressure 35 psi and fragmentor voltage of 100 V. Masshunter workstation software (LC/MS data acquisition, version B.03.01) was used to control the LC-MS/MS system.

Method validation

Validation was performed in accordance with Food and Drug Administration (FDA) guidelines to establish sensitivity, specificity, selectivity, linearity, limit of detection, inter and intraday precision and accuracy, percentage recoveries, deconjugation and matrix effects. Steroid free rat plasma and urine were used for method validation.

Calibration curves of known standards were prepared by spiking charcoal-stripped plasma and urine with testosterone and epitestosterone and the internal standard (IS) stanozolol D3. Quality controls (QC) were prepared in the same manner over four concentration ranges of the calibration curve. The calibration curve was plotted for testosterone and epitestosterone levels in plasma and urine by using the analyte to IS ratio. The linearity of the calibration curve was determined using linear analysis.

The accuracy of the method was determined using replicate (N=6, per concentration level) QC samples at four concentration levels and comparing the mean calculated values to the nominal concentration values. Intra-day precision was determined by analysing the six replicated at each concentration level in one day and inter-day precision was performed by analysing 6 replicates at each concentration level over three consecutive days. The relative standard deviation (RSD %) was used for characterising precision. For the three concentration ranges, an acceptable variability was set at 15%, for the lower limit of quantification (LLOQ) this was set at 20%. LLOQ was determined as the lowest concentration of the analyte that gave a peak response which could be measured with precision and accuracy (RSD less than 20%).

The absolute extraction recoveries of testosterone and epitestosterone were determined by analysing a blank matrix of plasma and urine that was spiked with a known concentration of analyte and IS that had been extracted with standard solutions prepared in acetonitrile at the same concentrations. The peak area ratios were compared at four

Compounds	Retention Time (min)	MRM transitions	Collision energy (eV)
Testosterone	8.6	289.2>109	22
		289.2>97	26
Epitestosterone	10.58	289.2>109	21
		289.2>97	25
Stanozolol D3	11.64	332.2>81.2	50

Table 1: Analytical parameters for LC and MS.

concentration levels using six replicate samples at each concentration for the extracted and neat samples.

To analyse any effect of the matrix, blank plasma and urine were extracted and then spiked with known concentrations of testosterone, epitestosterone and IS, for comparison to a standard solution at equivalent concentrations in acetonitrile. These samples were prepared over four concentration ranges using replicates of six samples.

To assess the deconjugating activity of β -glucuronidase, the enzyme was incubated with standard concentrations of testosterone glucuronide, epitestosterone glucuronide and IS in blank plasma and urine over three concentration ranges using replicates of three samples. The samples consisted of blank plasma spiked with urine with 50 μ L of β -glucuronidase added and incubated at 50°C for two hours. The samples were then cooled in wet ice prior to extraction. The concentration of testosterone and epitestosterone by de-conjugation was compared to samples spiked at the same concentration ranges with testosterone and epitestosterone and IS.

Analysis of testosterone and epitestosterone in rat serum and urine samples

Samples were prepared as previously described [15] and modified for serum and urine, by adding 100 μ L of serum or urine to 1 mL of 0.2 M pH 7 phosphate buffer. The sample was spiked with 50 μ L of IS stanozolol-D3 to give a concentration of 2 ng/mL. The internal standard was used in order to compensate for variations in instrument injection to injection response and loss of analytes during the extraction procedure. 50 μ L of β -glucuronidase enzyme was added and samples were incubated for two hours at 50°C. The samples were cooled on wet ice and extracted as described above.

Results and Discussion

Method validation

The validation results are within the limits set by FDA guidelines. Injection of blank samples of charcoal stripped plasma and urine confirmed no components of the matrices were observed that would

interfere with the analytes. Figure 1 shows the chromatogram for extracted analytes in plasma and urine at 0.25 ng/mL.

The assay for urine analysis was linear for testosterone and epitestosterone between concentrations of 0.250 ng/mL-1000 ng/mL. Owing to the high range of standards low and high concentration calibrations curves were created for testosterone and epitestosterone. The determination coefficient (r^2) values were at or above 0.9917 for testosterone and 0.9997 for epitestosterone in urine and r^2 values were at or above 0.9919 for testosterone and 0.9997 for epitestosterone in plasma. Table 2 shows the accuracy, intra-day and inter-day precision results from the assay. The LLOQ for testosterone was found to be 0.250 ng/mL for testosterone and 0.250 ng/mL for epitestosterone.

The plasma assay was linear between 0.250 ng/mL-1000 ng/mL for testosterone and epitestosterone. The method was capable of detecting testosterone and epitestosterone at LLOQ of 0.250 ng/mL. The LLOD for testosterone was 0.125 ng/mL and 0.250 ng/mL epitestosterone. The extraction recoveries for testosterone and epitestosterone are shown in Table 3.

Table 4 shows the comparisons from the plasma and urine matrix effects between samples of plasma that have been extracted and spiked with standard concentrations in acetonitrile.

The deconjugation assay confirmed the β -glucuronidase enzyme was effective in de-conjugating testosterone and epitestosterone with the concentration and incubation for the concentrations shown in Table 5.

Application of method for determination of testosterone and epitestosterone in real samples of rat serum and urine

The validated method was applied to determine the total (free and de-glucuronidated) testosterone and epitestosterone in rat serum and urine samples. Table 6 shows the total analyte concentrations in a selection of rat urine samples. The average urinary testosterone and epitestosterone concentrations were 201.68 \pm 90.16 ng/mL and 85.37 \pm 21.20 ng/mL, respectively. The average ratio of concentrations of testosterone to epitestosterone in urine was 2.64 (range: 0.42-4.40).

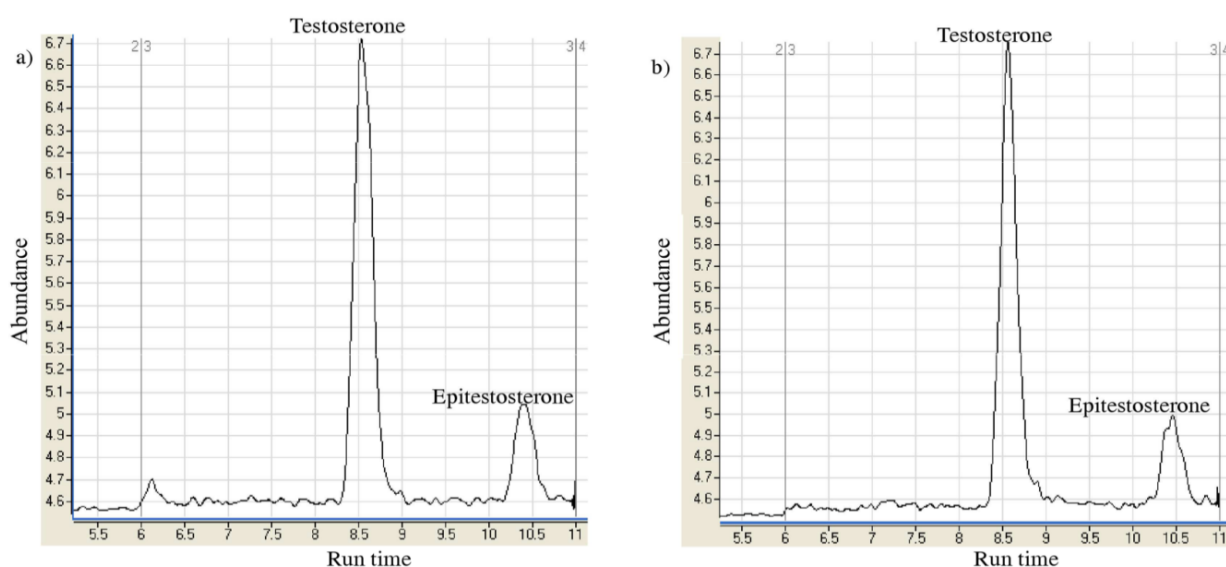


Figure 1: Chromatograms of testosterone and epitestosterone from a) plasma and b) urine at 0.250 ng/mL LLOQ concentration level for epitestosterone.

Matrix	Compound	Concentration (ng/mL)	Level	Precision RSD (%)		Accuracy (%)
				Intra-day N=6	Inter-day N=18	
Urine	Testosterone	0.25	LLOQ	10.01	10.11	107.03
		1.9	Low	2.66	5.51	96.61
		15.6	Medium	4.20	10.29	104.02
	Epitestosterone	250	High	1.13	3.39	97.11
		0.25	LLOQ	1.25	9.56	100.50
		1.9	Low	1.05	4.36	100.39
Plasma	Testosterone	15.6	Medium	8.17	8.94	96.45
		250	High	1.67	3.70	102.60
		0.25	LLOQ	8.14	8.21	109.14
	Epitestosterone	1.9	Low	3.94	4.26	98.26
		15.6	Medium	5.47	5.92	102.66
		250	High	1.86	2.29	96.55

Table 2: Inter-day and intra-day accuracy and precision for the detection of testosterone and epitestosterone in urine and plasma.

Matrix	Compound	Concentration (ng/mL)	% Extraction recovery (N=6)
Plasma	Testosterone	0.25 (LLOQ)	94.49
		1	81.63
		4	85.60
	Epitestosterone	16	85.98
		0.25 (LLOQ)	92.77
		1	89.67
Urine	Testosterone	4	84.72
		16	89.48
		0.25 (LLOQ)	91.23
	Epitestosterone	1	87.63
		4	88.29
		16	89.16

Table 3: Absolute extraction recovery results for testosterone and epitestosterone in plasma and urine.

Compound	Concentration (ng/mL)	Extracted plasma (ng/mL) N=6	Extracted urine (ng/mL) N=6	Standard in acetonitrile (ng/mL) N=6
Testosterone	0.25 (LLOQ)	0.248	0.241	0.250
	1	0.977	0.952	0.957
	2	2.019	2.005	2.053
	8	8.089	8.129	8.455
Epitestosterone	1	1.002	1.094	0.992
	2	2.051	1.961	1.977
	8	8.038	8.122	8.110

Table 4: Matrix effect of plasma and urine on spiked testosterone and epitestosterone compared with standard concentrations in acetonitrile.

The results highlighted a variation in urinary testosterone and epitestosterone in rats. Albeit observed in a small sample, there were also variations in the ratios as the majority of rats had values higher than those which have been found in humans shown to be around a 1:1 ratio with variations [16]. A number of factors could be considered for the variations in testosterone and epitestosterone concentrations

Matrix	Compound	Concentration (ng/mL)	Extracted spiked steroid in matrix (ng/mL)	De-conjugated steroid concentration (ng/mL)
Urine	Testosterone	1	0.98	0.91
		2	2.08	2.03
		15	16.96	14.03
	Epitestosterone	1	1.09	1.15
		2	2.11	2.14
		15	16.18	14.85
Plasma	Testosterone	1	1.02	1.09
		2	2.04	2.07
		15	15.81	15.29
	Epitestosterone	1	1.08	0.96
		2	1.97	1.94
		15	15.87	15.06

Table 5: The concentration of testosterone and epitestosterone after de-conjugation by β -glucuronidase compared to standard concentrations of extracted testosterone and epitestosterone in plasma matrix.

Matrix	Animal	Testosterone	Epitestosterone	Ratio
Urine (ng/mL)	1	280.30	75.65	3.71
	2	615.22	160.46	3.83
	3	142.64	48.32	2.95
	4	71.63	16.28	4.40
	5	36.80	86.14	0.42
	6	63.46	125.37	0.51
	Average	201.68 \pm 90.16	85.37 \pm 21.20	2.64

Table 6: Concentrations of testosterone and epitestosterone in rat urine \pm SEM of triplicate injections.

Matrix	Animal	Testosterone	Epitestosterone	Ratio
Serum (ng/ml)	1	386.39 \pm 6.268	1.70 \pm 0.286	227.89
	2	378.84 \pm 17.143	1.64 \pm 0.129	230.69
	3	318.52 \pm 1.517	1.40 \pm 0.025	227.12
	4	381.15 \pm 15.214	2.11 \pm 0.065	180.26
	5	378.80 \pm 8.662	1.55 \pm 0.028	244.54
	6	336.70 \pm 1.835	2.08 \pm 0.063	161.54
	Average	363.40 \pm 11.615	1.75 \pm 0.118	212.01

Table 7: Serum testosterone and epitestosterone in rats after the fourth week of sample collection \pm SEM of triplicate injections.

between individual animals. One factor might be the alterations and differences in metabolic rate of these steroids. Another factor is possibly due to the amount of water consumed by the rats as this can change drug levels in the body. These variations, and the deviation from the ratio typically observed in humans can greatly affect clinical trials thus warrant attention.

Table 7 shows the testosterone and epitestosterone concentrations in the sera of six rats. The average concentration of testosterone was 363.40 \pm 11.615 ng/mL and epitestosterone was 1.75 \pm 0.118 ng/mL. The average testosterone to epitestosterone ratio was 212.01 (range: 161.54-230.69). The T/E ratio in the serum was a markedly higher than in urine owing to the high testosterone and low epitestosterone concentration in all animals.

These results showed that there was less variation in concentration in the serum samples compared to the urine samples probably due to individual differences in water consumption. Previous methods have been reported but with limitations such as validated applications to either urine [17-20] or serum [21] only; and with an extraction method taking greater than 1 hour [21]. In comparison, the new method benefits from improved resolution [19] and the reduced requirement for

sample volumes [20,21]. This report of a straightforward novel method of rapid analyses of testosterone and epitestosterone in both rat urine and sera benefits from a new rapid liquid-liquid extraction procedure, suitable for both biofluids. Unlike the predecessors, the proposed method streamlines experimental *in vivo* designs where simultaneous monitoring of testosterone and epitestosterone in both urine and blood is required, such as investigating the effect and consequences of altered metabolic function in testosterone and epitestosterone glucuronidation [7-10]. The new method also eliminates potential confounding effects from applying multiple methods to cater for multiple sample matrices.

Conclusions

A method has been described here for the validation and detection of the anabolic steroids testosterone and epitestosterone in rat serum and urine at low ng/mL concentrations using LC-MS/MS. This method shows optimal conditions for the de-conjugation of the steroid glucuronides to detect both free and conjugated steroids. In addition, this method has a good extraction recovery rate for both steroids allowing for accurate concentration determination by the use of the internal standard, stanozolol-D3.

Whilst methods have been described for the detection of testosterone and epitestosterone in humans [17,18], this method provides deconjugation and extraction procedures affording detection of testosterone and epitestosterone concentrations in rat serum and urine. This method could be used in future research to investigate testosterone and epitestosterone metabolism *in vivo*. Furthermore, it could also be extended to detect steroids in human serum and urine samples to confirm urinary levels of these compounds used in sports doping tests. This technique could also be applied to measure metabolism patterns of steroids *in vivo* in place of the current method used by WADA which specifies measurements acquired by gas chromatography tandem mass spectrometry [22]. An advantage is that the LC method could be incorporated into forensic toxicology software to take full advantage of drug testing by LC MS/MS.

References

1. The World-Anti Doping Agency: The 2014 Prohibited List-International Standard.
2. Sottas PE, Saugy M, Saudan C (2010) Endogenous steroid profiling in the athlete biological passport. *Endocrinol Metab Clin North Am* 39: 59-73, viii-ix.
3. The World-Anti Doping Agency: 2012 Anti-Doping Testing Figures Report.
4. Stárka L (2003) Epitestosterone. *J Steroid Biochem Mol Biol* 87: 27-34.
5. Sten T, Finel M, Ask B, Rane A, Ekström L (2009) Non-steroidal anti-inflammatory drugs interact with testosterone glucuronidation. *Steroids* 74: 971-977.
6. Schulze JJ, Lundmark J, Garle M, Skilving I, Ekström L, et al. (2008) Doping test results dependent on genotype of uridine diphospho-glucuronosyl transferase 2B17, the major enzyme for testosterone glucuronidation. *J Clin Endocrinol Metab* 93: 2500-2506.
7. Deshmukh N, Petróczy A, Barker J, Székely AD, Hussain I, et al. (2010) Potentially harmful advantage to athletes: a putative connection between UGT2B17 gene deletion polymorphism and renal disorders with prolonged use of anabolic androgenic steroids. *Subst Abuse Treat Prev Policy* 5: 7.
8. Jakobsson J, Ekström L, Inotsume N, Garle M, Lorentzon M, et al. (2006) Large differences in testosterone excretion in Korean and Swedish men are strongly associated with a UDP-glucuronosyl transferase 2B17 polymorphism. *J Clin Endocrinol Metab* 91: 687-693.
9. Jenkinson C, Petróczy A, Barker J, Naughton DP (2012) Dietary green and white teas suppress UDP-glucuronosyltransferase UGT2B17 mediated testosterone glucuronidation. *Steroids* 77: 691-695.
10. Jenkinson C, Petróczy A, Naughton DP (2012) Red wine and component flavonoids inhibit UGT2B17 *in vitro*. *Nutr J* 11: 67.
11. Mackenzie PI (1987) Rat liver UDP-glucuronosyltransferase. Identification of cDNAs encoding two enzymes which glucuronidate testosterone, dihydrotestosterone, and beta-estradiol. *J Biol Chem* 262: 9744-9749.
12. Ikushiro S, Emi Y, Iyanagi T (1997) Protein-protein interactions between UDP-glucuronosyltransferase isozymes in rat hepatic microsomes. *Biochemistry* 36: 7154-7161.
13. Deshmukh NI, Zachar G, Petróczy A, Székely AD, Barker J, et al. (2012) Determination of stanozolol and 3'-hydroxystanozolol in rat hair, urine and serum using liquid chromatography tandem mass spectrometry. *Chem Cent J* 6: 162.
14. Deshmukh NI, Barker J, Petróczy A, Naughton DP (2012) Detection of testosterone and epitestosterone in human hair using liquid chromatography-tandem mass spectrometry. *J Pharm Biomed Anal* 67-68: 154-8.
15. Deshmukh N, Hussain I, Barker J, Petróczy A, Naughton DP (2010) Analysis of anabolic steroids in human hair using LC-MS/MS. *Steroids* 75: 710-714.
16. Catlin DH, Hatton CK, Starcevic SH (1997) Issues in detecting abuse of xenobiotic anabolic steroids and testosterone by analysis of athletes' urine. *Clin Chem* 43: 1280-1288.
17. He C, Li S, Liu H, Li K, Liu F (2005) Extraction of testosterone and epitestosterone in human urine using aqueous two-phase systems of ionic liquid and salt. *J Chromatogr A* 1082: 143-149.
18. Borts DJ, Bowers LD (2000) Direct measurement of urinary testosterone and epitestosterone conjugates using high-performance liquid chromatography/tandem mass spectrometry. *J Mass Spectrom* 35: 50-61.
19. Zhan Y, Musteata FM, Basset FA, Pawluszyn J (2011) Determination of free and deconjugated testosterone and epitestosterone in urine using SPME and LC-MS/MS. *Bioanalysis* 3: 23-30.
20. Levent A, Altun A, Yardim Y, Sentürk Z (2014) Sensitive voltammetric determination of testosterone in pharmaceuticals and human urine using a glassy carbon electrode in the presence of cationic surfactant. *Electrochimica Acta* (In Press).
21. French D (2013) Development and validation of a serum total testosterone liquid chromatography-tandem mass spectrometry (LC-MS/MS) assay calibrated to NIST SRM 971. *Clin Chim Acta* 415: 109-117.
22. The World-Anti Doping Agency (2004) WADA Technical Document-TD2004EAAS. Reporting and evaluation guidance for testosterone, epitestosterone, T/E ratio and other endogenous steroids.

Citation: Jenkinson C, Deshmukh NIK, Shah I, Zachár G, Székely AD, et al. (2014) LC-MS/MS-Based Assay for Free and Deconjugated Testosterone and Epitestosterone in Rat Urine and Serum. *J Anal Bioanal Tech* S5: 006. doi:[10.4172/2155-9872.S5-006](https://doi.org/10.4172/2155-9872.S5-006)

Submit your next manuscript and get advantages of OMICS Group submissions

Unique features:

- User friendly/feasible website-translation of your paper to 50 world's leading languages
- Audio Version of published paper
- Digital articles to share and explore

Special features:

- 300 Open Access Journals
- 25,000 editorial team
- 21 days rapid review process
- Quality and quick editorial, review and publication processing
- Indexing at PubMed (partial), Scopus, EBSCO, Index Copernicus and Google Scholar etc
- Sharing Option: Social Networking Enabled
- Authors, Reviewers and Editors rewarded with online Scientific Credits
- Better discount for your subsequent articles

Submit your manuscript at: <http://www.omicsonline.org/submission>

